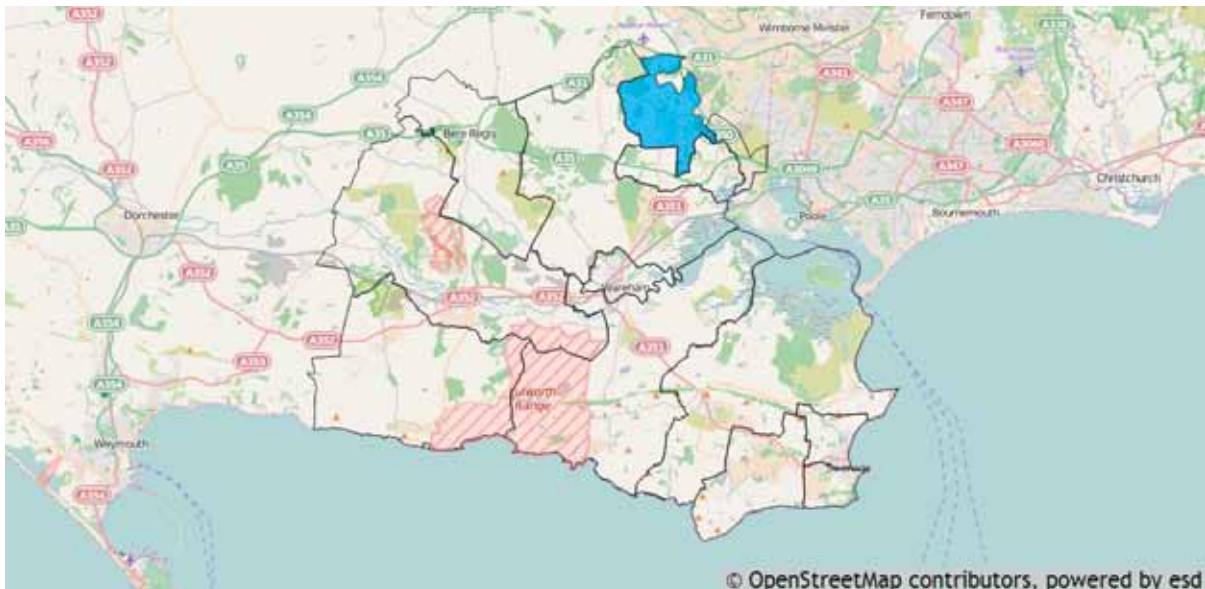


Lytchett Matravers Ward Factsheet

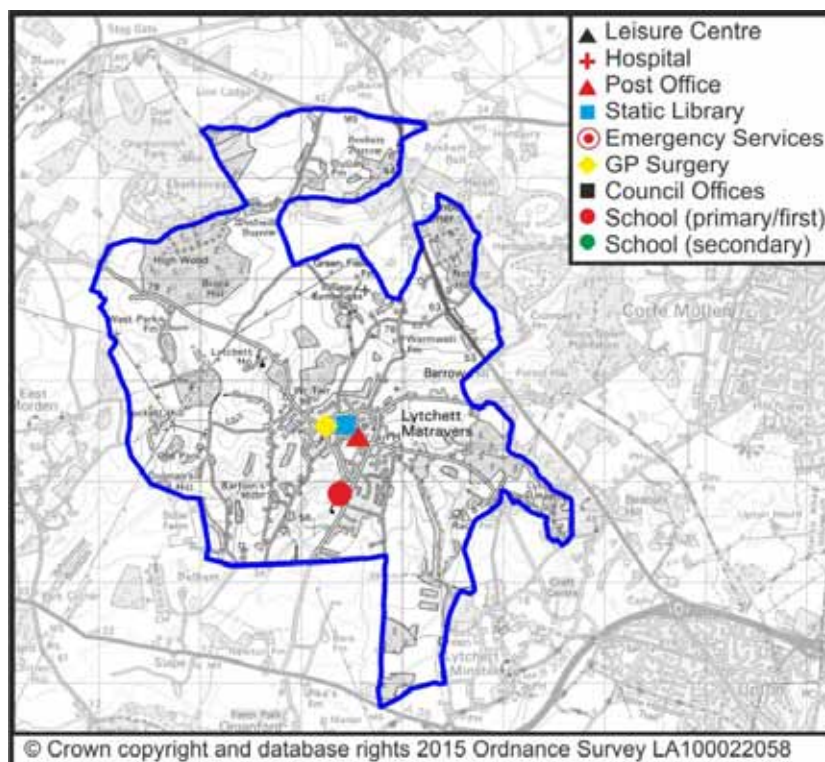
This report provides a summary of the latest available information on the demographic and socio-economic make-up of the Lytchett Matravers Ward within Purbeck. It looks at the population structure and provides information on the economic, housing and educational achievement of the Ward.

Lytchett Matravers is one of the 13 Wards of Purbeck. It has an area of 1,381 hectares which represents 3.41% of the total area of Purbeck District.



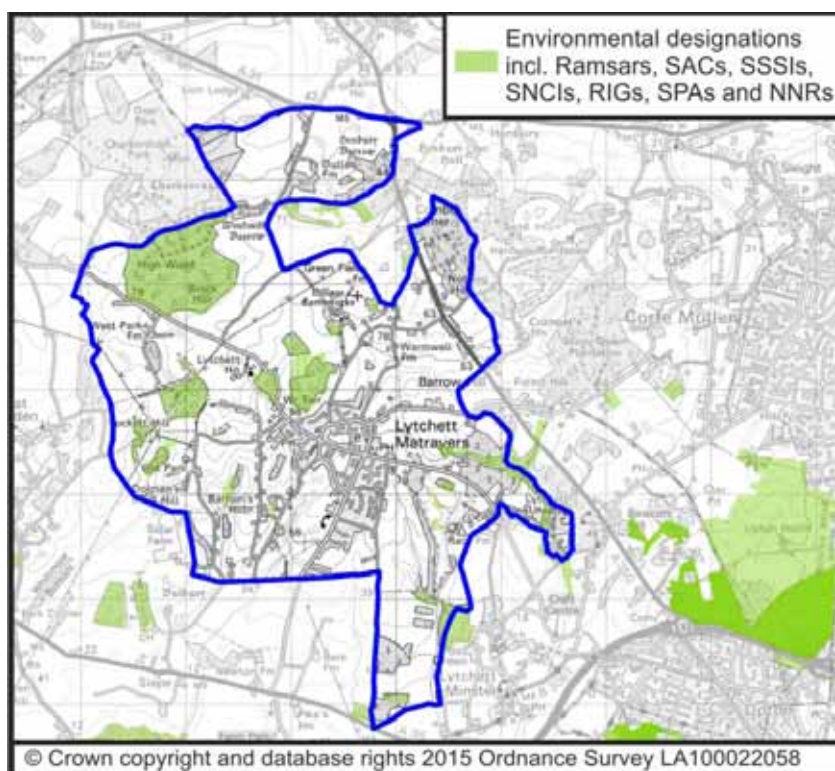
Facilities

The following map shows the main facilities of this Ward.



Environment

Purbeck has a large number of environmental and landscape designations. The following map shows the spatial extent of these designations in this Ward.



People

Lytchett Matravers has a resident population of 3,424 which represents 7.61% of the total Purbeck resident population of 44,973. Lytchett Matravers's resident population is 51.4% female and 48.6% male.

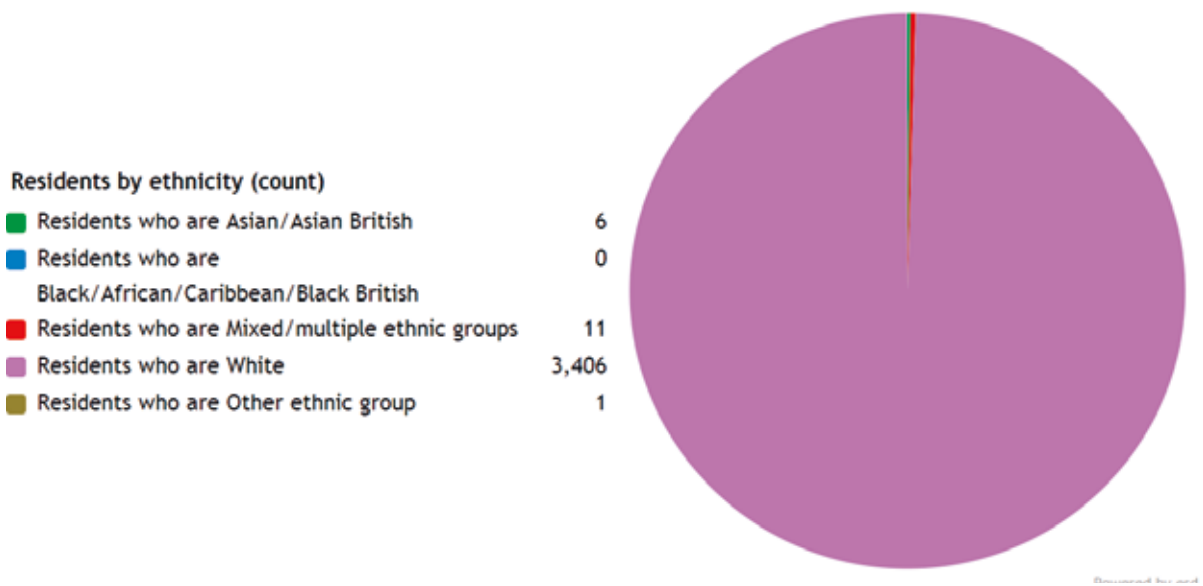
Age

The mean age of the Lytchett Matravers Ward population is 44 years compared to a mean age of 45 years for residents in the whole of Purbeck. The predominant age band in Lytchett Matravers Ward is Age 45 to 59 which represents 23.71% of the population.

Ethnicity

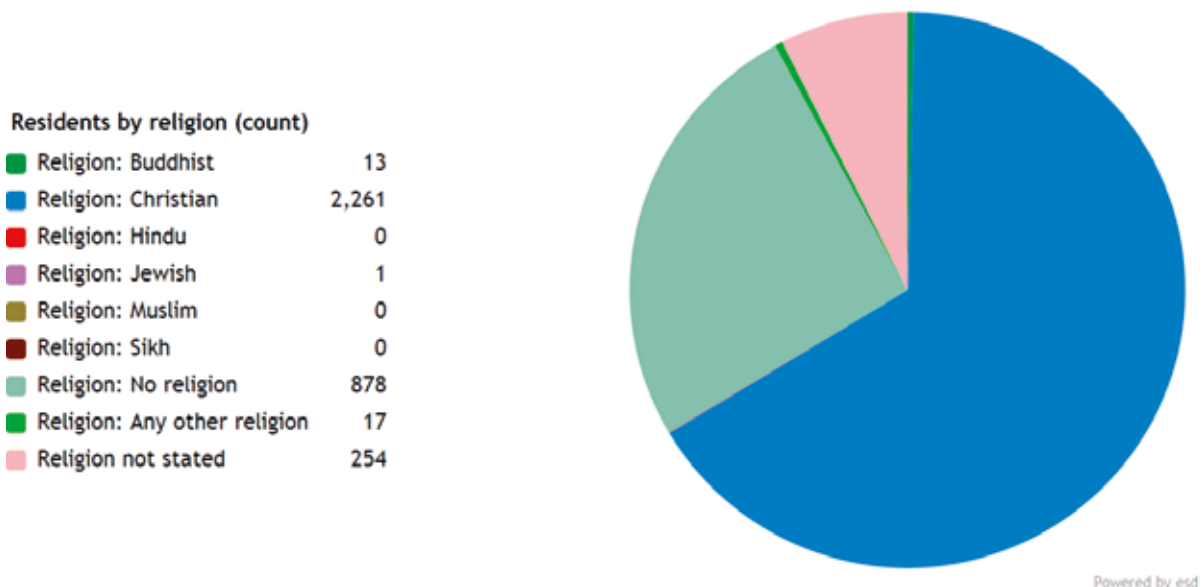
The largest ethnic group is 'Number of usual residents who are White' with 99.5% of the Ward's population. That compares with a figure of 98.6% for the District as a whole, 97.9% for the Dorset County and 95.4% for all of South West. The second largest ethnic group is 'Number of usual residents who are Mixed/multiple ethnic groups' with 0.2% of the Ward's population. That compares with 0.7% for the District as a whole, 0.8% for the Dorset County and 1.4% for all of South West.

The ethnic split of Lytchett Matravers residents is shown below.



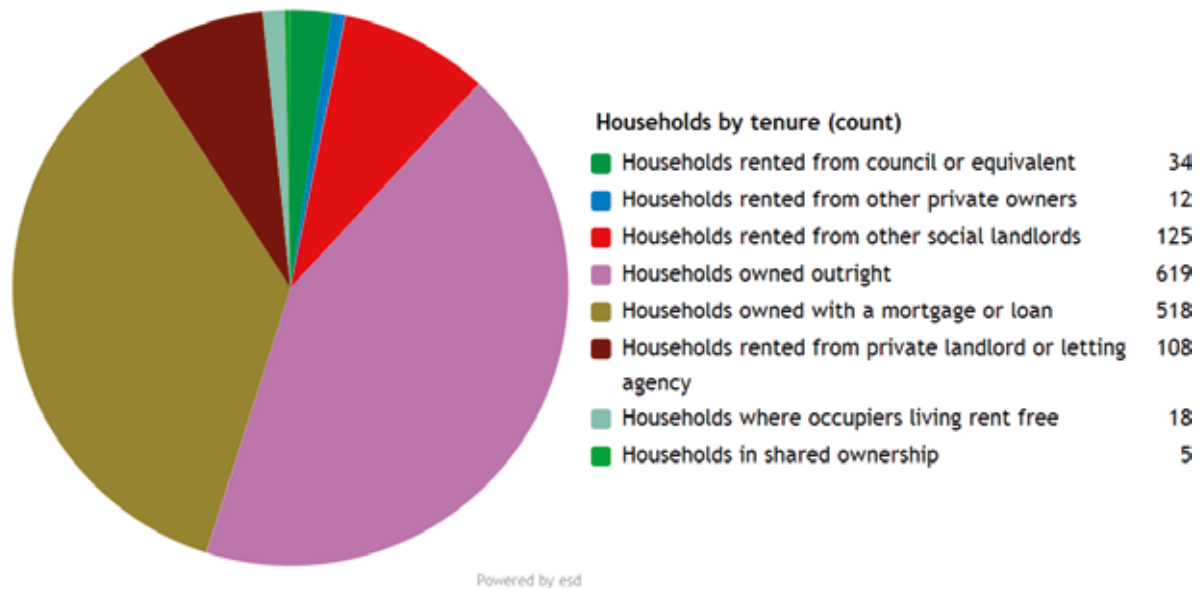
Religion

The 2011 Census provided Ward data on religion as shown below.



Housing

Lytchett Matravers Ward has 1,439 households, which represents 7.35% of Purbeck's 19,583 households. The household split by tenure is shown below.



The largest number of households lives in 'Number of all households - Owned outright' accommodation with 43.0% of the Ward's households. That compares with 42.4% for the District as a whole, 43.0% for Dorset County and 32.5% for the whole of South West.

The second largest number of households lives in 'Percentage of all households - Owned with a mortgage or loan' accommodation with 36.0% of the Ward's households. That compares with 27.1% for the District as a whole, 29.1% for Dorset County and 35.1% for the whole of South West.

The Ward has 115 households with dependent children aged 0 to 4. That represents 7.99% of the Ward's households.

389 households in the Ward have 'Dependent children in household: All ages'. That represents 27.03% of the Ward's households.

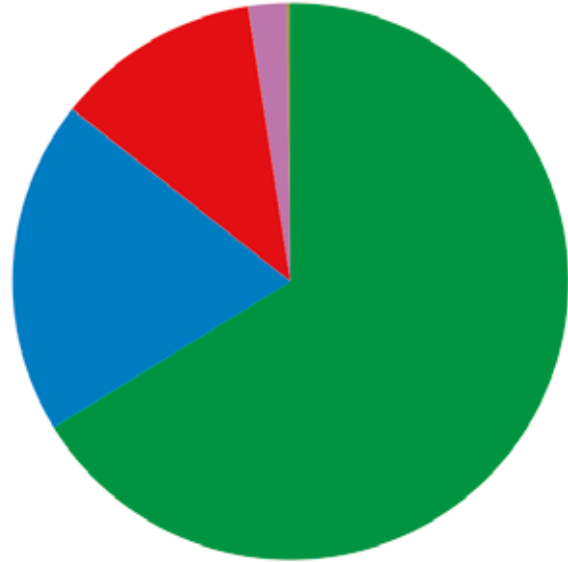
Occupancy

The following chart shows the occupancy rating of the residents of this Ward. Occupancy rating provides a measure of whether a household's accommodation is overcrowded or under-occupied.

The chart shows the number of households with an occupancy rating (rooms) of +2 or more, as a percentage of all households (Census 2011). The ages of the household members and their relationships to each other area is used to derive the number of rooms/bedrooms they require, based on a standard formula. The number of rooms/bedrooms required is subtracted from the number of rooms/bedrooms in the household's accommodation to obtain the occupancy rating. An occupancy rating of -1 implies that a household has one fewer rooms/bedrooms than required, whereas +1 implies that they have one more room/bedroom than the standard requirement.

Occupancy rating (rooms) by Occupancy rating (count)

■ Occupancy rating +2 or more	953
■ Occupancy rating +1	279
■ Occupancy rating 0	172
■ Occupancy rating -1	32
■ Occupancy rating -2 or less	3



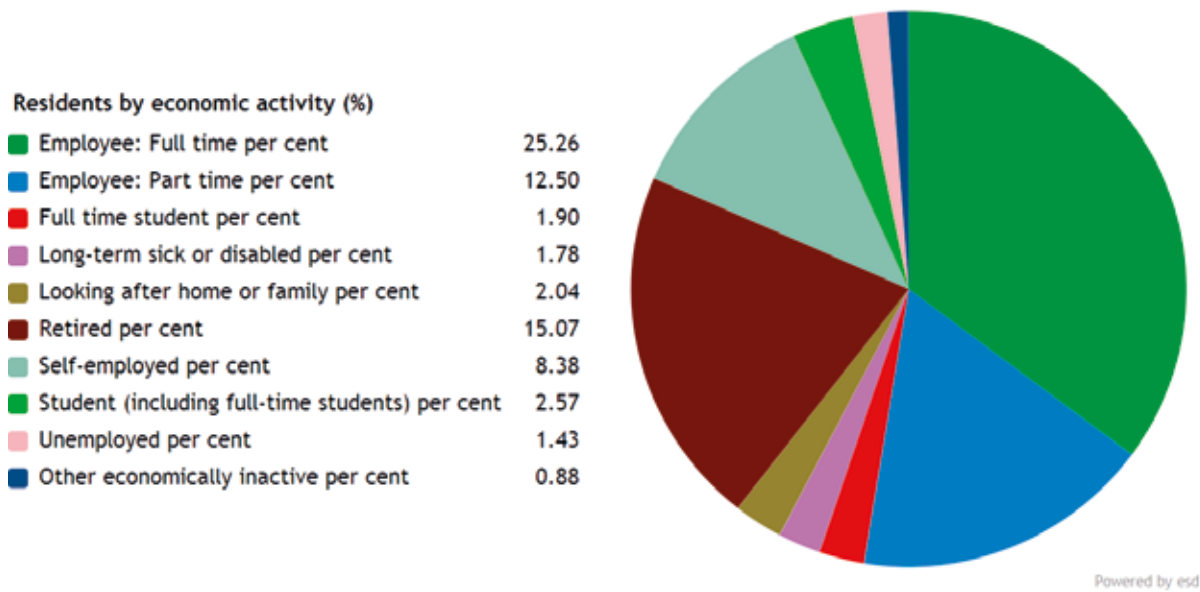
Powered by met

Second Homes

Council tax records at June 2015 showed that 0.67% of dwellings in this Ward were second homes. The percentage of second homes in Purbeck was 7.33%. Purbeck has the highest proportion of second homes of all of Dorset's districts.

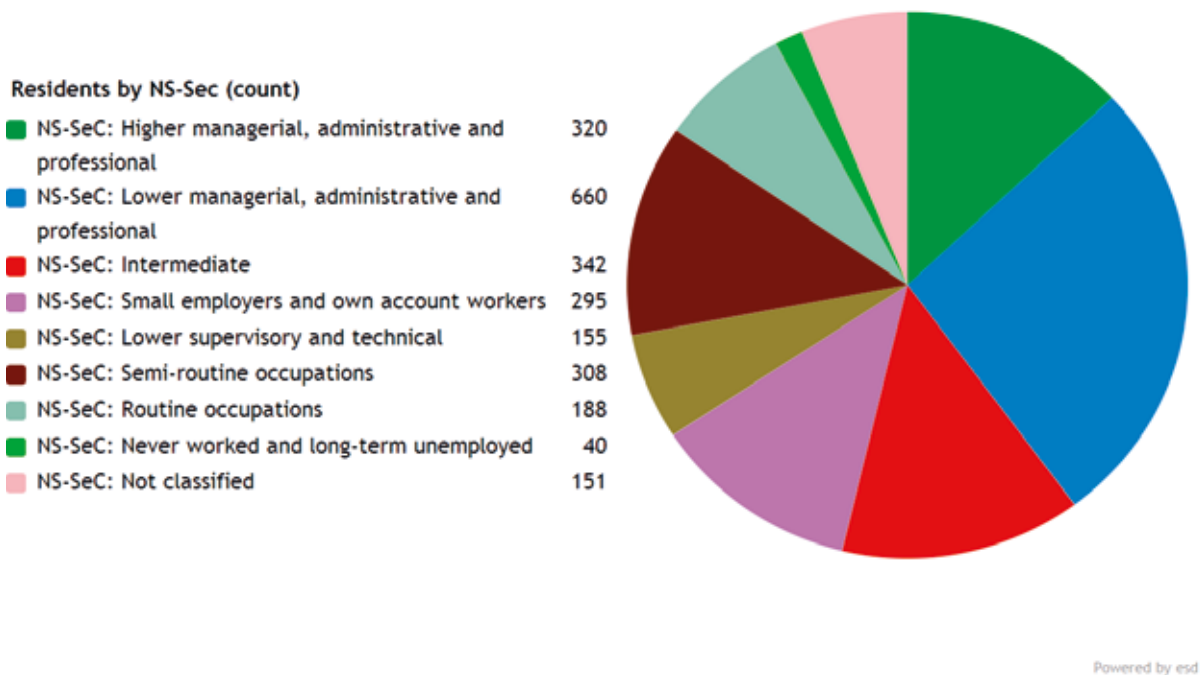
Economy

The following chart shows the economic activity of the Ward's population from the 2011 Census.



Employment

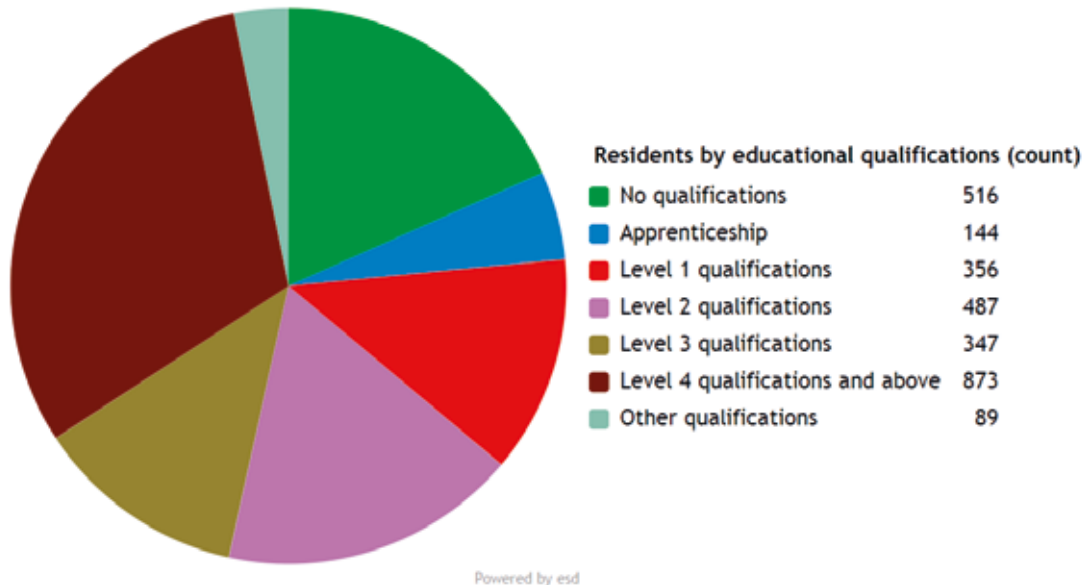
The following chart provides a breakdown of the Lytchett Matravers Ward by socio-economic classification for all residents aged 16 – 74.



The National Statistics Socio-economic Classification (NS-SEC) provides an indication of socio-economic position based on occupation. It is an Office for National Statistics standard classification.

The largest group is 'National Statistics Socio-Economic Classification - 2. Lower managerial, administrative and professional occupations' representing 19.28% of the Ward's population.

Education



25.50% of Lytchett Matravers residents have achieved level 4 qualifications and above compared to 27.40% in South West as a whole and 15.07% of Lytchett Matravers residents have no qualifications compared to 20.70% in South West.

Level 1 Qualifications = GCSE Grades D-G / L1 Diploma

Level 2 Qualifications = GCSE Grades A-C / L2 Diploma

Level 3 Qualifications = A Levels / L3 Diploma / L3 Extended Diploma

Level 4 Qualifications = Foundation Degree / Higher National Certificate (HNC)

Level 5 Qualifications = Foundation Degree / Higher National Diploma (HND)

Level 6 Qualifications = Degree

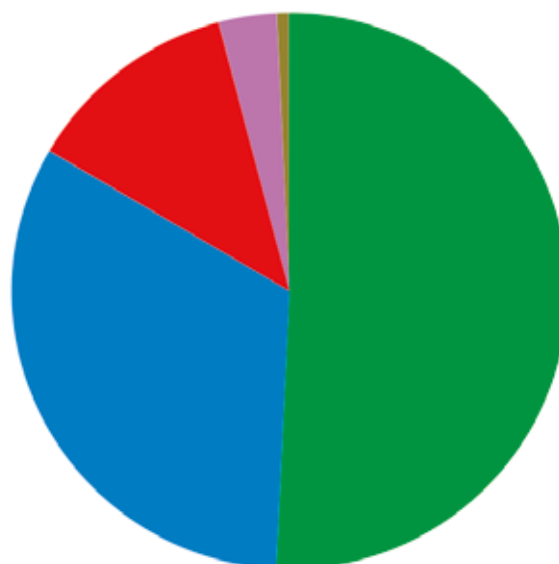
Level 7 Qualifications = Master's Degree

Level 8 Qualifications = Doctorate (PhD)

Health

Residents by level of health (count)

Very good health	1,738
Good health	1,118
Fair health	428
Bad health	115
Very bad health	25



Powered by esd

Lytchett Matravers has 115 (3.4%) residents that report being in bad health and 25 (0.7%) residents that report being in very bad health. Its ranking for the number of residents in very bad health is 2 (out of 13 Wards) within Purbeck.

References

The majority of the data in this factsheet was sourced from LG Inform Plus.